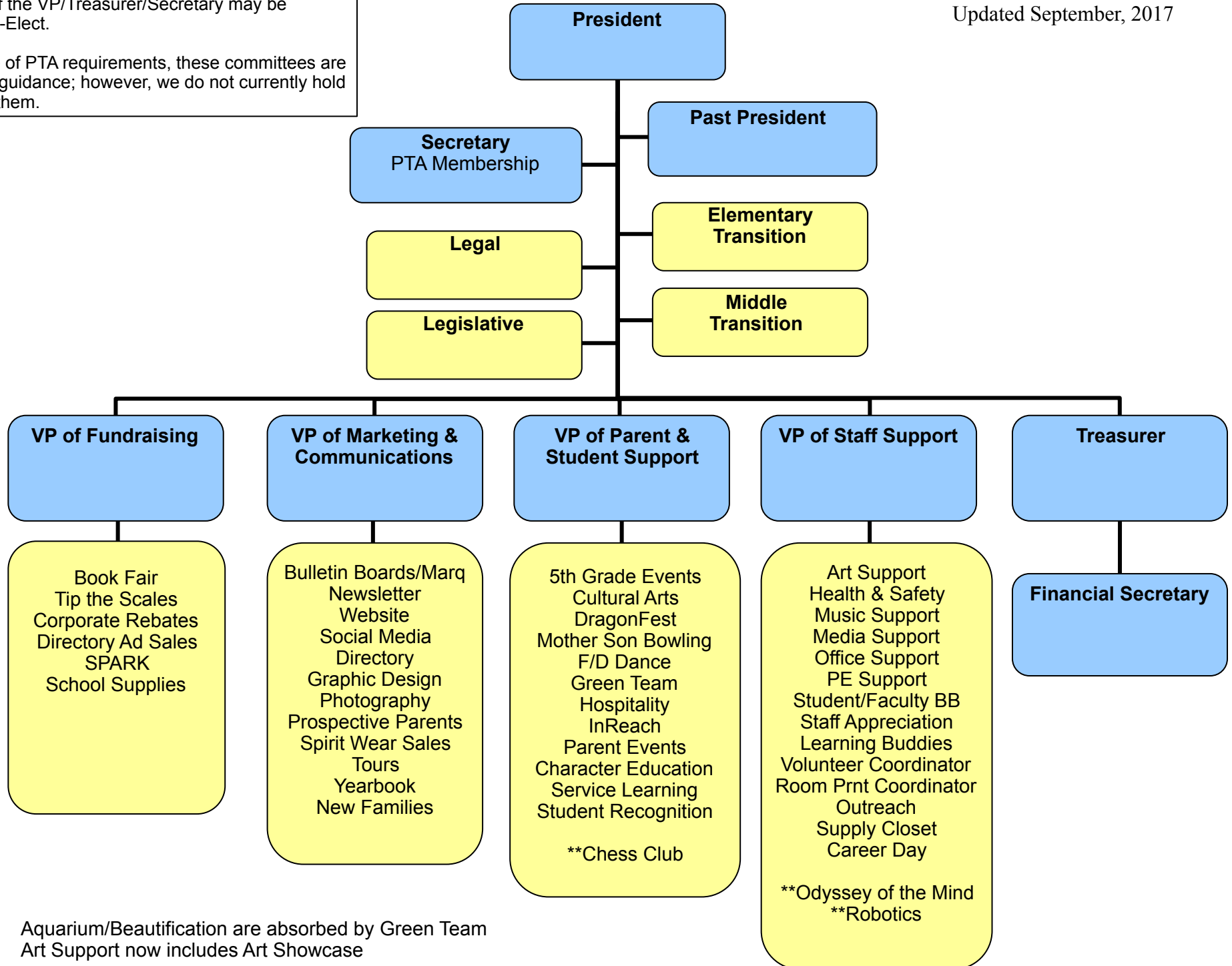


# PTA Organization 2017-18

Updated September, 2017

Notes: Blue positions are members of Exec Board.  
Any one of the VP/Treasurer/Secretary may be  
\*President-Elect.

\*\*Because of PTA requirements, these committees are  
under our guidance; however, we do not currently hold  
chairs for them.



Aquarium/Beautification are absorbed by Green Team  
Art Support now includes Art Showcase